

Summary

Parcel Number 18 012 02 026
 Location Address 3695 ROCKBRIDGE RD
 AVONDALE EST GA 30002
 Legal Description
 Property Class R3 - RESIDENTIAL LOT
 Neighborhood 0800
 Tax District T104
 Millage Rate
 Approximate/Computed Acres 1.2
 Homestead N

[View Map](#)

Valuation

	2019	2018	2017	2016
LUC	114	114	114	114
Class	R3	R3	R3	R3
+ Land Value	\$17,800	\$17,800	\$17,800	\$14,000
+ Building Value	\$0	\$0	\$0	\$0
= Total Value	\$17,800	\$17,800	\$17,800	\$14,000
Assessed Value	\$7,120	\$7,120	\$7,120	\$5,600

Recent Sales In Area

[Recent Sales in Area](#)

[Recent Sales in Neighborhood](#)

No data available for the following modules: Residential Improvement Information, Commercial Improvement Information, Accessory Information, Photos, Sketches.

DeKalb County makes every effort to produce the most accurate information possible. No warranties, expressed or implied, are provided for the data herein, its use or interpretation.

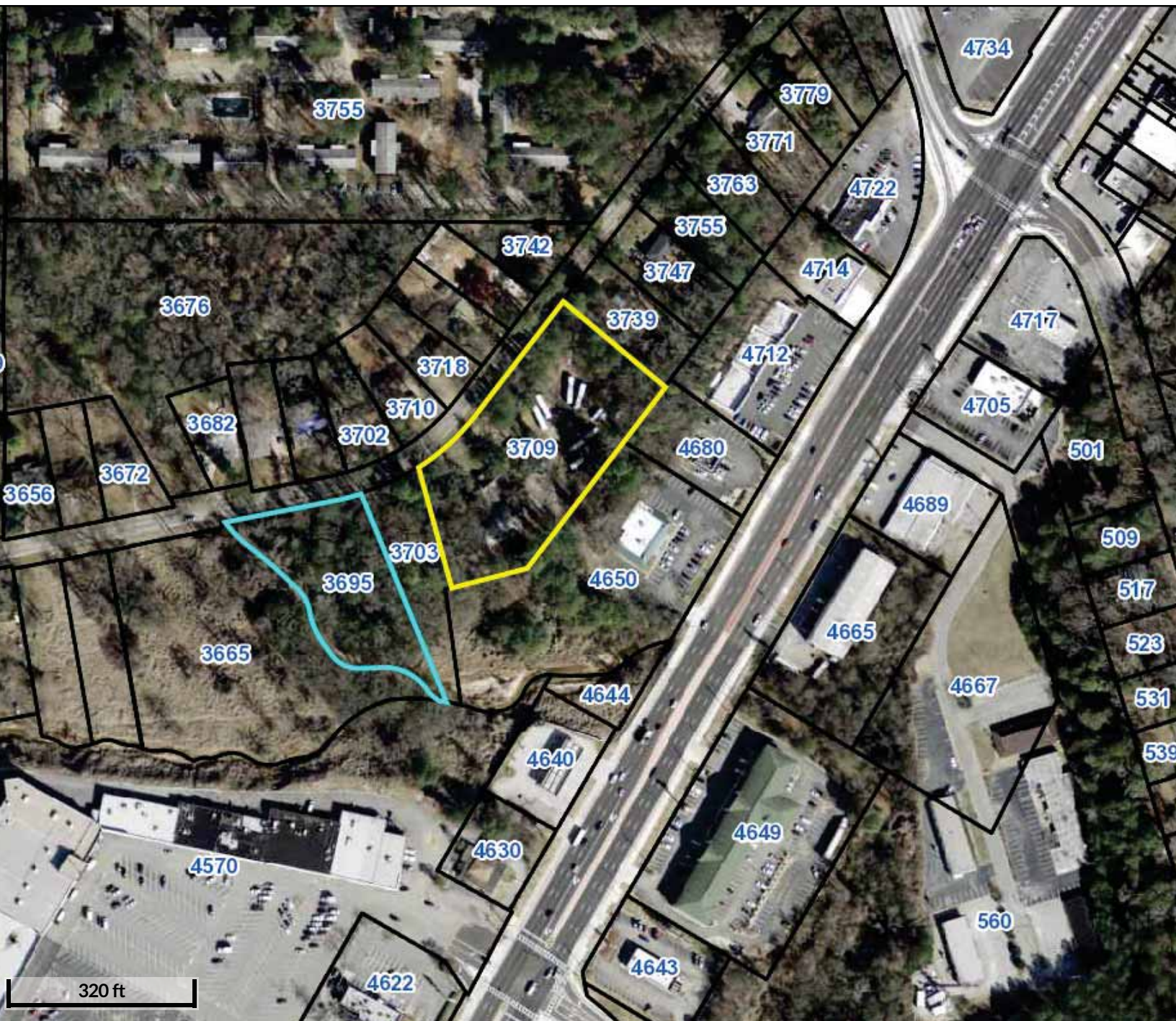
Last Data Upload: 7/1/2019, 7:36:01 PM

Version 2.2.29

Developed by

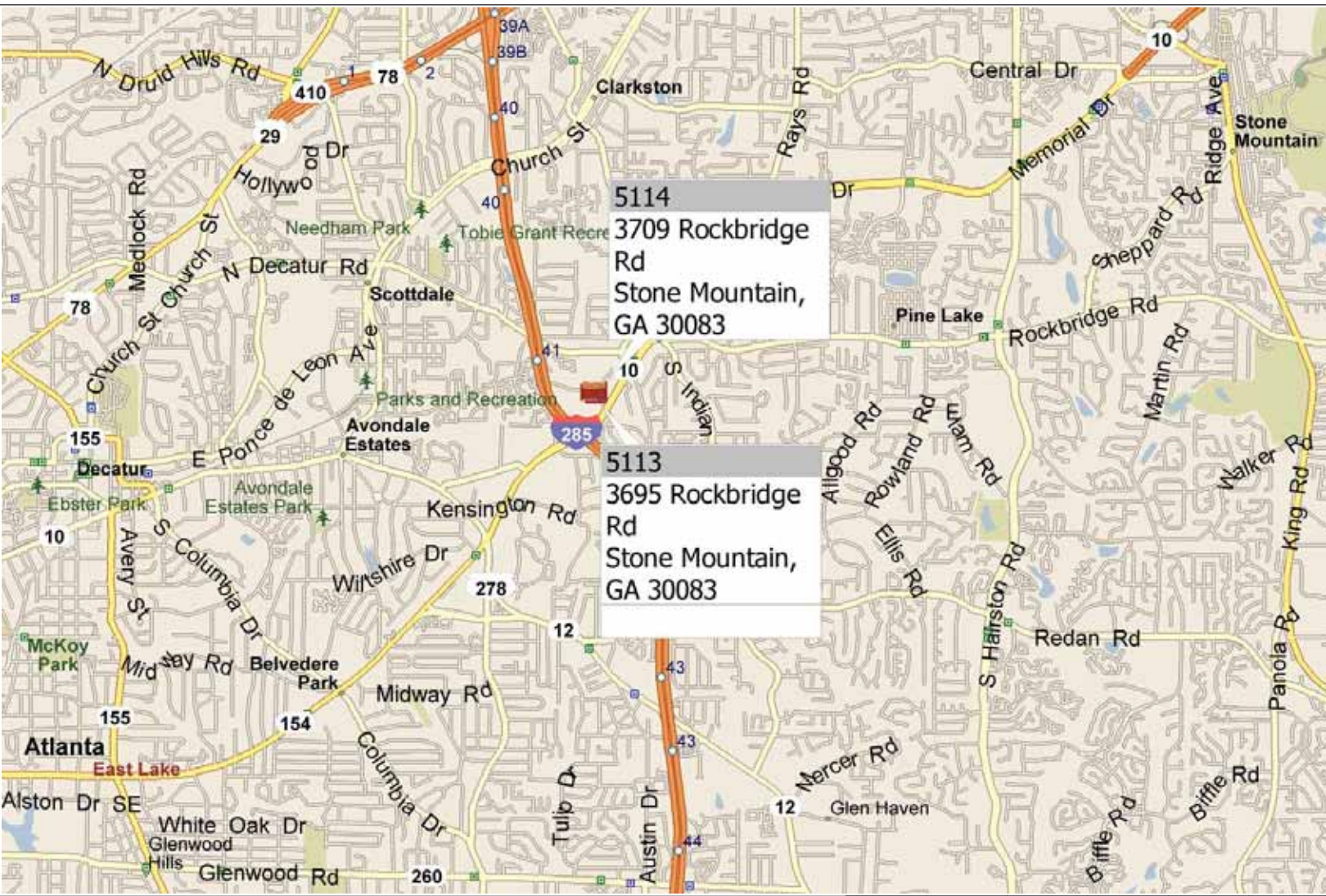






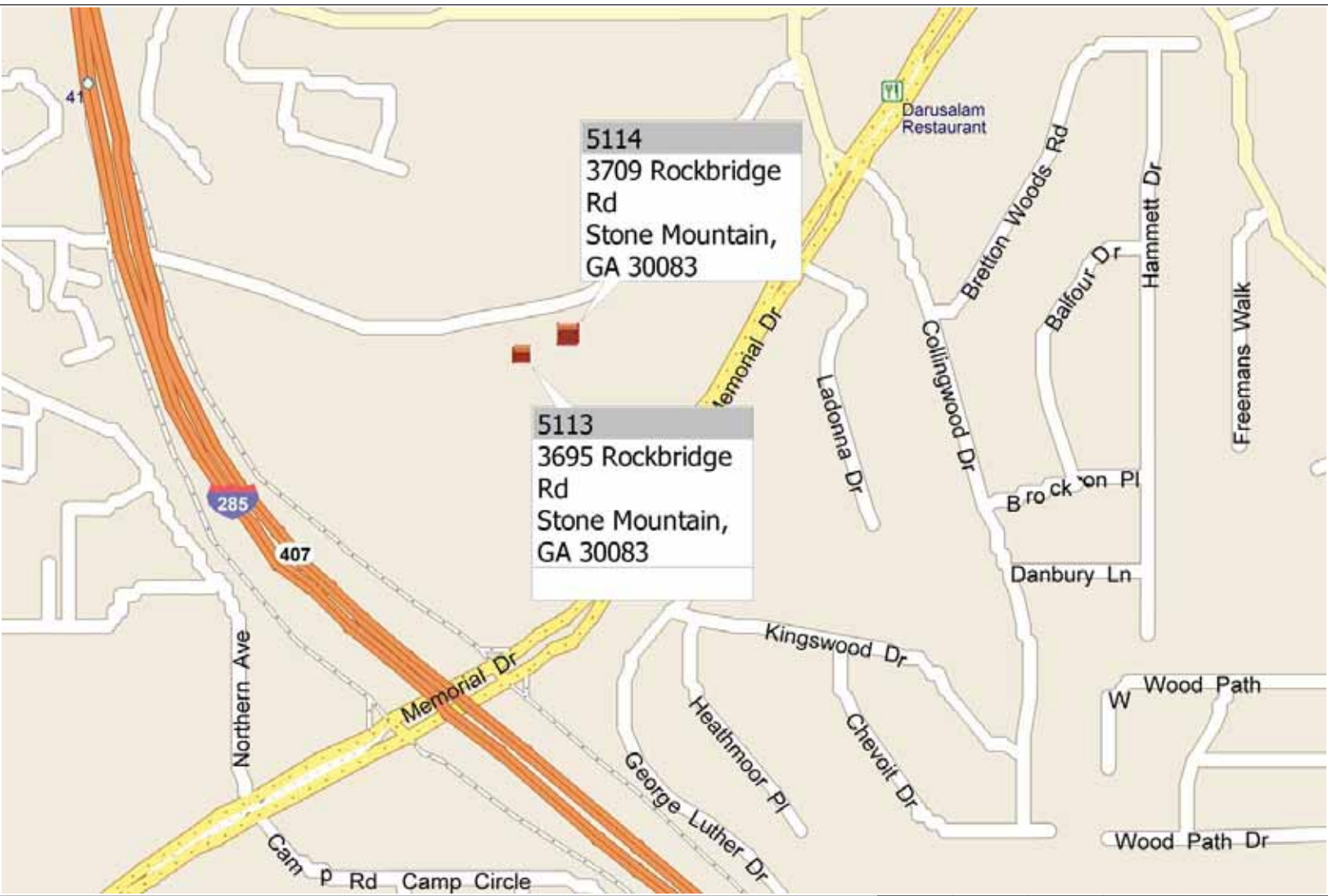
320 ft





5114
3709 Rockbridge Rd
Stone Mountain,
GA 30083

5113
3695 Rockbridge Rd
Stone Mountain,
GA 30083



5114
3709 Rockbridge Rd
Stone Mountain, GA 30083

5113
3695 Rockbridge Rd
Stone Mountain, GA 30083

0 yds 200 400 600